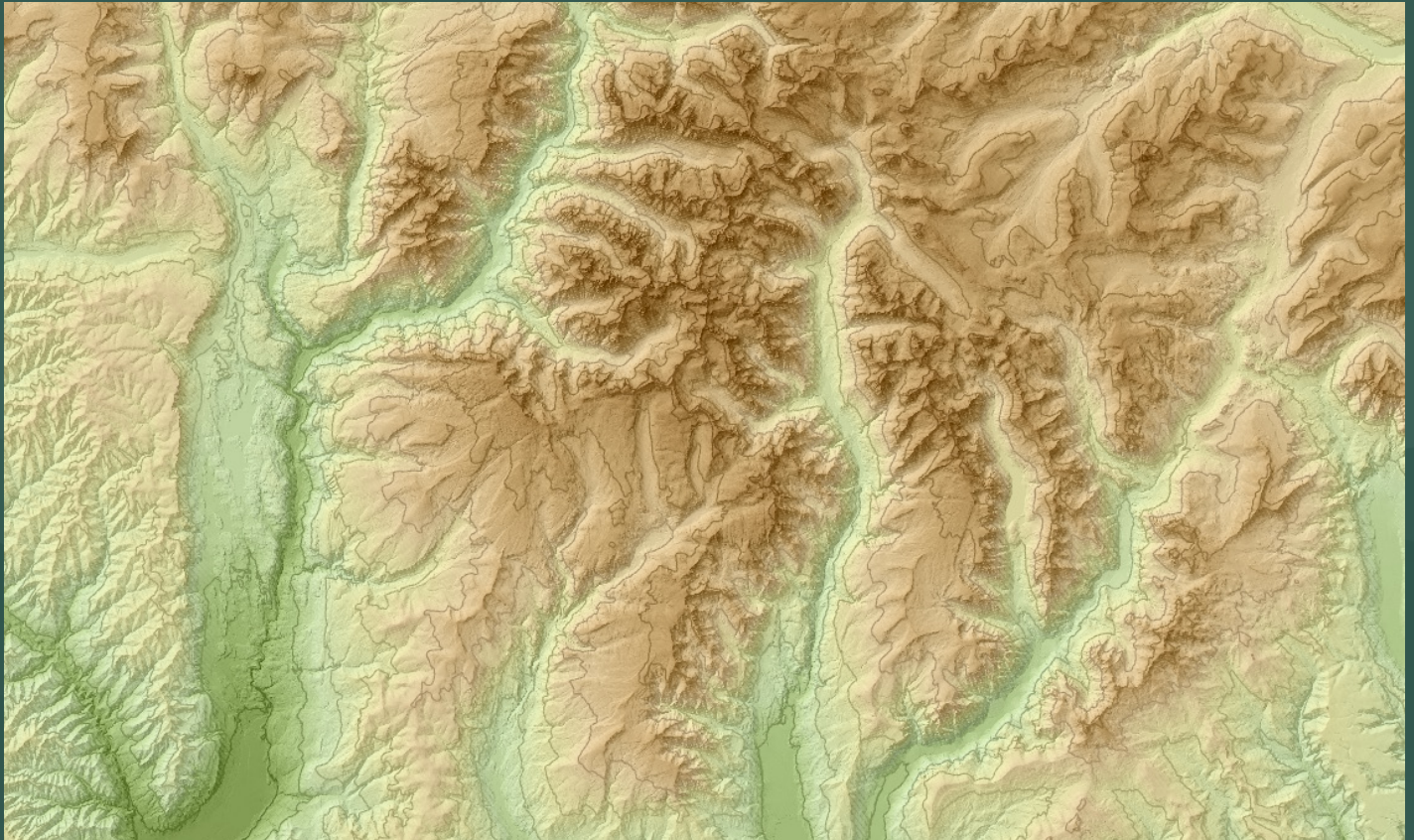


# GEO 428 | 3 CREDITS | FALL 2025

# DIGITAL TERRAIN ANALYSIS



## Course Description:

Have you ever wondered how to analyze the Earth's surface using cutting-edge technology? In this hands-on course, you'll dive into the exciting world of digital terrain modeling. You will master powerful elevation analysis techniques and learn how to apply them to environmental modeling.

You'll use industry software in the lab-based sessions to develop, analyze, and visualize terrain data. Through problem-solving projects, you'll build a strong foundation for careers in environmental science, GIS, and related fields. Both undergraduate and graduate students are welcome.

### DAYS & TIMES:

**M, W, F - 12:30 - 1:40 PM**

### LOCATION:

**GEO BUILDING, RM 201**

### INSTRUCTOR:

**DR. ARIKA LIGMANN-ZIELINSKA**  
**ARIKA@MSU.EDU**

**QUESTIONS? EMAIL DR. LIGMANN-ZIELINSKA AT [ARIKA@MSU.EDU](mailto:ARIKA@MSU.EDU)**



Department of Geography,  
Environment, and Spatial Sciences  
MICHIGAN STATE UNIVERSITY